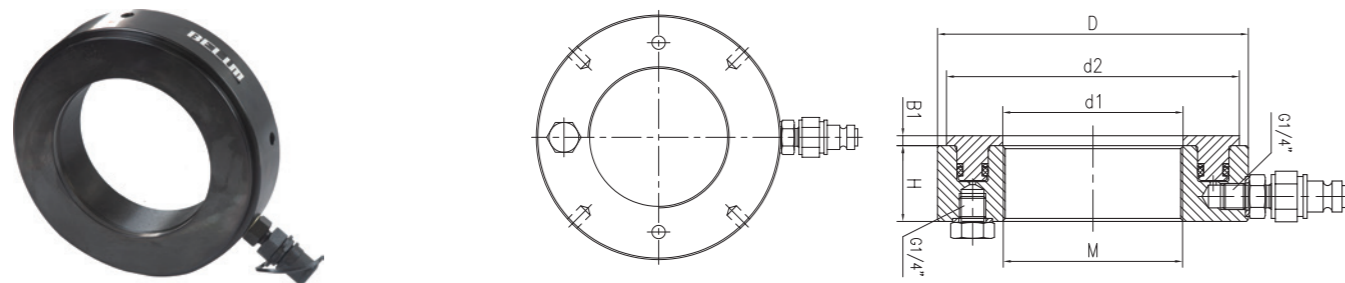


BHNM SERIES HYDRAULIC NUTS

MAX. PRESSURE: 70-80 MPa
STROKE: 5-30 mm



Commonly used in bearings, flywheels, propellers and other workpiece presses hydraulic tools. With the resulting top thrust is smooth, no impact, the process does not hurt the workpiece and other characteristics. Through the hydraulic nut inner thread, which can be installed in the shaft parts, the piston under the action of 700–800bar hydraulic pressure to push the workpiece to the installation position.



Model	Thread	Outside Diam. d	Inner Diam. d1	Piston Diam. d2	Height h	B1	Stroke	Effective Area	Weight
	m	mm	mm	mm	mm	mm	mm	mm ²	kg
BHNM50	M50x1.5	114	50.5	104	38	4	5	3376	2.7
BHNM60	M60x2	125	60.5	115	38	5	5	4239	2.8
BHNM70	M70x2	135	70.5	127	38	5	5	4710	3.2
BHNM80	M80x2	146	80.5	137	38	5	5	5181	3.7
BHNM90	M90x2	156	90.5	147	38	5	5	5652	4
BHNM100	M100x2	166	100.5	158	38	6	5	5987	4.4
BHNM110	M110x2	178	110.5	169	38	6	5	6286	4.95
BHNM120	M120x2	188	120.5	179	38	6	5	8568	5.25
BHNM130	M130x2	198	130.5	190	38	6	5	7165	5.65
BHNM140	M140x2	208	140.5	200	39	7	5	7605	6
BHNM150	M150x2	220	150.5	211	39	7	6	7736	6.6
BHNM160	M160x3	232	160.5	224	40	7	6	8002	7.6
BHNM170	M170x3	244	170.5	235	41	7	6	8669	8.4
BHNM190	M190x3	270	191	259	42	8	8	9266	10.5
BHNM200	M200x3	282	201	271	43	8	8	8612	11.5
BHNM210	Tr210x4	294	212	282	44	8	9	11728	12.5
BHNM220	Tr220x4	306	222	293	44	8	9	11815	13.5
BHNM230	Tr230x4	318	232	305	45	8	9	12270	15
BHNM250	Tr250x4	342	252	329	46	9	10	13317	17
BHNM280	Tr280x4	380	282	363	49	9	12	14683	22
BHNM300	Tr300x4	404	302	386	51	10	13	15640	25
BHNM400	Tr400x4	522	402	499	60	11	17	20602	45.5
BHNM500	Tr500x4	636	502	609	67	12	19	24337	70
BHNM600	Tr600x4	748	602	721	73	13	23	28274	100
BHNM710	Tr710x4	870	712	840	78	15	20	30730	135
BHNM800	Tr800x4	965	802	936	80	16	20	31770	161
BHNM900	Tr900x4	1075	902	1043	86	17	25	32848	205

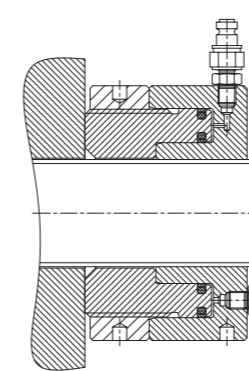
BBHN SERIES SELF-LOCK HYDRAULIC NUTS

MAX. PRESSURE: 150 MPa
STROKE: 6-20 mm

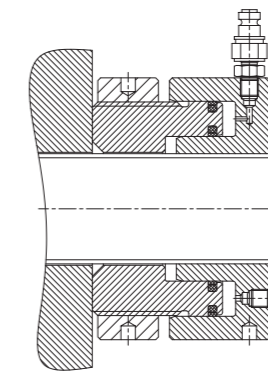


BELIUM BBHN series hydraulic nuts are designed and manufactured for inspection and regular maintenance and need to open the flange connection. Unlike traditional hydraulic bolt tensioners, the BELIUM BBHN series hydraulic nuts are designed to permanently replace the flange with a standard hex nut. Once the hydraulic tensile force is applied to the bolt, the hydraulic tensile force is permanently preserved by the built-in mechanical load ring of the hydraulic nut. Standard series hydraulic nut, the bolt size from M22 to M100, other sizes can be customized.

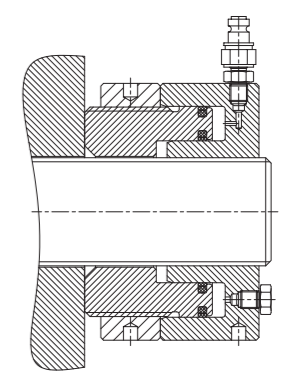
Hydraulic nut working pressure is 1500Bar, with quick connector, suitable for use with BELIUM manual or pneumatic or electric hydraulic bolt tensioner pump.



Screw the hydraulic nut to the upper end of the tightened bolt.



When the piston is jacked up, the bolts are stretched. The gap is the amount of tension of the bolt.



Screw the locking ring to the nut body, release pressure and work is completed.